


WHAT IS THIS?



The collage features various Halloween-themed items: a tray of colorful candies, several pencils with Halloween designs, and a stack of clue cards. The clue cards are as follows:

- Clue #1: Fill in the Blank**
30 is 118 eyes 96 the 71 green 73 bow 58 a
- Clue #2: Right or Wrong?**
6 more than 36 5 less than 20 8 more than 18
- Clue #3: Halloween Sort**
Figure out each answer. Color the candies the same color as the bag they belong in. Tally up how many of each candy you find in each box.
- Clue #4: The Haunted House**
Cross out the...
1 Correct
2 Correct
3 Correct
4 Correct
- Clue #5: Picture Decoder**
Find each answer. Then, draw a line to each match. Last, use the decoder at the bottom to solve the clue.

solve the mystery
The Case of the Missing Candy

Who Stole the Candy?
As you solve each clue, cross out the suspects who did not take the candy. The suspect left at the end is the culprit!

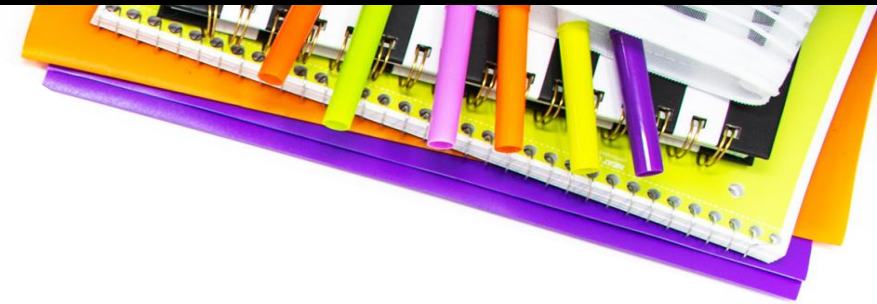
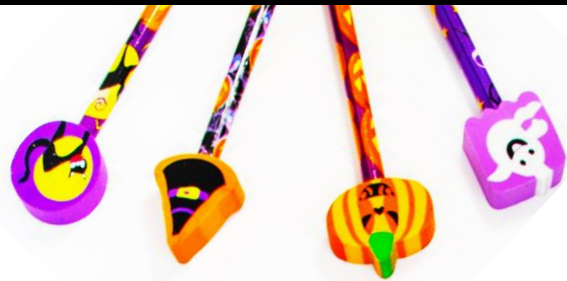
Witch	Ghost	Vampire	Monster
I like green candy.	I like marshmallows!	I like red candy.	I don't like candy.
I like candy corn.	I like green candy.	I like chocolate candy.	I like chocolate candy.

Spooky Bones Frankenstein Mummy Pumpkin Head

Name: _____

Students complete a series of clues to figure out who took the missing candy!

HOW TO PLAY



What Happened?

Oh no! You put down your trick-or-treat bag for a second and someone took it. It's your job to figure out who took the Halloween candy. Solve the clues to figure out the mystery!

1. Take a suspect list and then start solving each clue.
2. Each time you solve a clue, you will get closer to discovering who the culprit (thief) is!
3. Cross out wrong suspects each time you find out new information. Good luck!



Clue #1: Fill in the Blank









30	is	118	eyes	96	the	71	green	73	bow	58	a
60	likes	69	wearing	59	red	87	hat	67	whoever	117	candy
40	took	80	marshmallow	55	eyes	44	candy	86	monster	114	not

Tell what number comes next. Some count up. Some count down.											
64,65,	Answer:	Word:	120,119,	Answer:	Word:	72,71,	Answer:	Word:			
66,___	67	whoever	118,___	117	candy	70,___	69	wearing			
43,42,	40	took	27,28,	30	is	55,56,	58	a			
41,___			29,___			57,___					
93,94,	96	the	111,112,	114	not	90,89,	87	hat			
95,___			113,___			88,___					

Solve each problem. Write the answer. Then, write the word that goes with it. When you are done, read the words in order from top to bottom in each row to figure out the clue.

Who Stole the Candy?

As you solve each clue, cross out the suspects who did not take the candy. The suspect left at the end is the culprit!

 I like green candy.	 I like marshmallows.	 I like red candy.	 I don't like candy.
Witch		Vampire	Monster
 I like candy corn.	 I like green candy.	 I like chocolate candy.	 I like chocolate candy.
Spooky Bones	Frankenstein	Mummy	Pumpkin Head

Name: _____

Each time students solve a clue, it will reveal what suspect to cross out.

When all clues are completed, the mystery of the missing candy will be solved!

SKILL PRACTICE

Clue #1: Fill in the Blank

30	is	118	eyes	96	the	71	green	73	bow	58	a
60	likes	69	wearing	5	hat	67	whoever	117	candy		
40	took	80	marshmallow								

Tell what number
Answer: Word:
64, 65, 66, **67** **whoever**
43, 42, 41, **40** **took**
93, 94, 95, **96** **the**

Solve each problem. Write the answer words in order from top to bottom.

Clue #2: Right or Wrong?

6 more than 36 42	5 less than 20 14	8 more than 18 26
7 less than 57 50	3 more than 69 72	4 less than 81 78
7 more than 87 93	5 more than 74 79	9 more than 49 57

In each box, color a thumbs up or a thumbs down to show if the answer is correct.

How many answers were correct?

1 Correct = Cross out the witch. 2 Correct = Cross out the ghost. 3 Correct = Cross out Pumpkin Head. 4 Correct = Cross out Frankenstein.	5 Correct = Cross out the vampire. 6 Correct = Cross out the monster. 7 Correct = Cross out the mummy. 8 Correct = Cross out Spooky Bones.
--	---

Clue #3: Halloween Sort

Color the candies the same color as the bag they belong in. Tally up how many of each candy you find in each box.

Answer: 5
Answer: 6
Answer: 7
Answer: 8

10
- 4
6

8
- 3
5

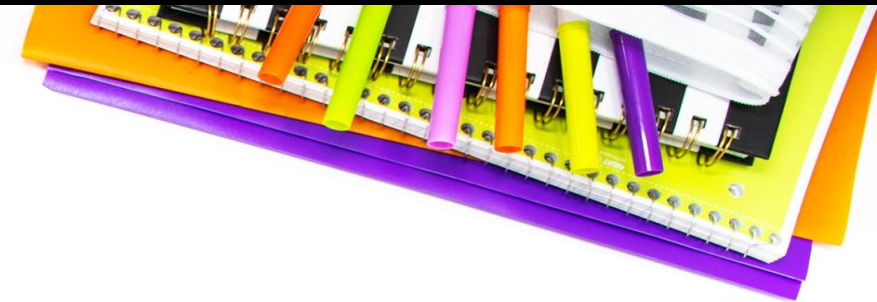
17
- 9
8

Cross out the mummy if this is true:
• 2 candies in Bag 5
• 3 candies in Bag 6
• 1 candy in Bag 7
• 3 candies in Bag 8

- Counting to 120
- Relate Counting to Add/Subtract
- Add to 20
- Subtract to 20
- Subtraction as Unknown Addends
- Halloween-Themed
- Error Analysis Practice

All clues focus on reviewing 1st grade math skills!

MULTIPLE VERSIONS



Print & Digital Forms

Clue #1: Fill in the Blank

30	is	118	eyes	96	the	71	green	73	bow	58	a
----	----	-----	------	----	-----	----	-------	----	-----	----	---

Clue #2: Right or Wrong?

6 more than 36	5 less than 20	8 more than 18
----------------	----------------	----------------

Clue #3: Halloween Sort

Figure out each answer. Color the candies the same color as the bag they belong in. Tally up how many of each candy you find in each box.

orange	yellow	green	purple
Answer: 5	Answer: 6	Answer: 7	Answer: 8

3 Clue Version

Cross out the winner if this is true:

- 3 candies in Bag 5
- 2 candies in Bag 6
- 3 candies in Bag 7
- 1 candy in Bag 8

Cross out the winner if this is true:

- 3 candies in Bag 5
- 2 candies in Bag 6
- 2 candies in Bag 7
- 3 candies in Bag 8

Cross out the winner if this is true:

- 3 candies in Bag 5
- 2 candies in Bag 6
- 1 candy in Bag 7
- 3 candies in Bag 8

Cross out the winner if this is true:

- 2 candies in Bag 5
- 3 candies in Bag 6
- 1 candy in Bag 7
- 3 candies in Bag 8

Clue #1: Fill in the Blank

30	is	118	eyes	96	the	71	green	73	bow	58	a
----	----	-----	------	----	-----	----	-------	----	-----	----	---

Clue #2: Right or Wrong?

6 more than 36	5 less than 20	8 more than 18
----------------	----------------	----------------

Clue #3: Halloween Sort

Figure out each answer. Color the candies the same color as the bag they belong in. Tally up how many of each candy you find in each box.

orange	yellow	green	purple
Answer: 5	Answer: 6	Answer: 7	Answer: 8

Clue #4: The Haunted House

Clue #5: Picture Decoder

Find each answer. Then, draw a line to each match. Last, use the decoder at the bottom to solve the clue.

10	8	4	2	6	9	3	7	5
----	---	---	---	---	---	---	---	---

5 Clue Version

Answers:

10	8	4	2	6	9	3	7	5
----	---	---	---	---	---	---	---	---

Letters:

A	B	C	D	E	F	G	H	I	J	K	L	M	N	O	P	Q	R	S	T	U	V	W	X	Y	Z
---	---	---	---	---	---	---	---	---	---	---	---	---	---	---	---	---	---	---	---	---	---	---	---	---	---

The culprit doesn't like:

Use this decoder to help you figure out what letter is equal to each picture.

Clue #1: Fill in the Blank

30	is	118	eyes	96	the	71	green	73	bow	58	a
60	likes	69	wearing	59	red	87	hat	67	whoever	117	candy
40	took	80	marshmallow	55	eyes	44	candy	86	monster	114	not

Tell what number comes next. Some count up. Some count down.

64,65, 66, 67	120,119, 118, 117	72,71, 70, 69
43,42, 41, 40	27,28, 29, 30	55,56, 57, 58
93,94, 95, 96	111,112, 113, 114	90,89, 88, 87

Solve each problem. Write the answer. Then, write the word that goes with it. When you are done, read the words in order from top to bottom in each row to figure out the clue.

Clue #1: Fill in the Blank

30	is	118	eyes	96	the	71	green	73	bow	58	a
60	likes	69	wearing	59	red	87	hat	67	whoever	117	candy
40	took	80	marshmallow	55	eyes	44	candy	86	monster	114	not

Tell what number comes next. Some count up. Some count down.

64,65, 66, 67	120,119, 118, 117	72,71, 70, 69
43,42, 41, 40	27,28, 29, 30	55,56, 57, 58
93,94, 95, 96	111,112, 113, 114	90,89, 88, 87

Solve each problem. Write the answer. Then, write the word that goes with it. When you are done, read the words in order from top to bottom in each row to figure out the clue.

Short & Long Options

MATH FACT VERSION!



Who Stole the Candy?

As you solve each clue, cross out the suspects who did not take the candy. The suspect left at the end is the thief!

Witch	Ghost	Vampire	Monster
I like green candy.	I like marshmallows!	I like red candy.	I don't like candy.
I like candy corn.	I like green candy.	I like chocolate candy.	I like chocolate candy.

Spooky Bones Frankenstein Mummy Pumpkin Head

Name: _____

Clue #1: Fill in the Blank

16	is	7	eyes	9	the	15	green	2	bow	8
13	likes	17	wearing	19	red	12	hat	14	whoever	5
11	took	20	marshmallow	3	eyes	4	candy	18	monster	6

Answer: _____ Word: _____

19-5= _____ 12-7= _____ 19-2= _____

15-4= _____ 20-4= _____ 14-6= _____

18-9= _____

Clue #2: Right or Wrong?

2+2	3+4	6+3
4	6	8
9+5	1+2	13+7
15	3	20
5+4	15+2	4+2
9	17	6

Clue #3: Halloween Sort

Figure out each answer. Color the candies the same color as the bag they belong in. Tally up how many of each candy you find in each bag.

Orange	Yellow	Green	Purple
5	6	7	8
11	13	10	15
5	6	4	7
12	14	17	9
4	7	9	3

Now, find the correct key to solve the clue!

Cross out the witch if this is true.

Cross out Frankenstein if the monster took the candy.

Cross out the monster if this is true.

Cross out the mummy if this is true.

- 2 orange candies
- 3 yellow candies
- 2 green candies
- 1 purple candy

Clue #4: The Haunted House

3+9	5+4	8+8	6+8	5+6	18+2
G	B	R	L	U	E
9+8	7+6	10+8	12+3	7+3	14+5
P	E	I	N	D	K

First write the answer in each box on the haunted house. Then, read what to do in the box at the bottom.

Cross out the boxes with the following answers:
19, 17, 14, 18, 9, 11, 10

The letters that are left will reveal a message.

The culprit does not like candy that is _____.

Clue #5: Picture Decoder

Find each answer. Then, draw a line to each match. Last, use the decoder at the bottom to solve the clue.

7	14	18	15	12	9	13	16	10
---	----	----	----	----	---	----	----	----

Answers: _____

Letters: _____

The culprit doesn't like: _____

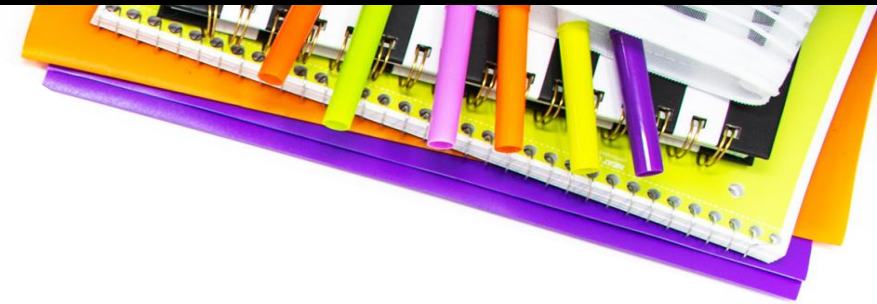
Use this decoder to help you figure out what letter is equal to each picture.

A =	G =	M =	S =	Y =
B =	H =	N =	T =	Z =
C =	I =	O =	U =	
D =	J =	P =	V =	
E =	K =	Q =	W =	
F =	L =	R =	X =	

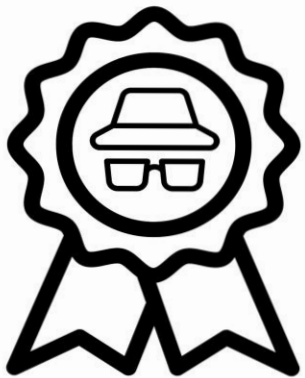
Same clues. Same mystery. Different math!

There is an extra version included that focuses on addition and subtraction facts to 20.

FAST FINISHER ACTIVITY



**The Detective Agency sends
congratulations to:**



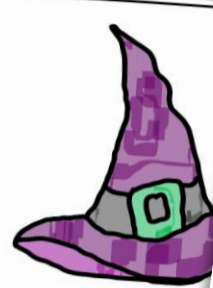
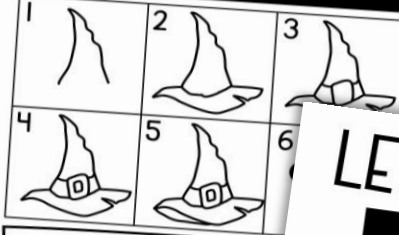
Lindsay
You solved the mystery!

11/2
Date

AW
Presented by:

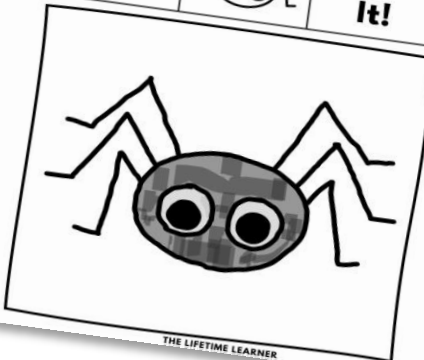
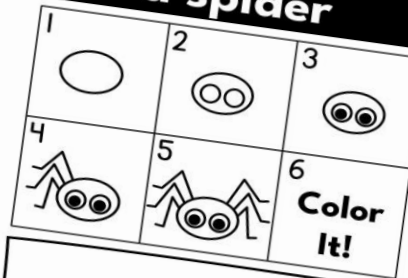
THE LIFETIME LEARNER

LET'S DRAW...
a witch hat



THE LIFETIME LEARNER

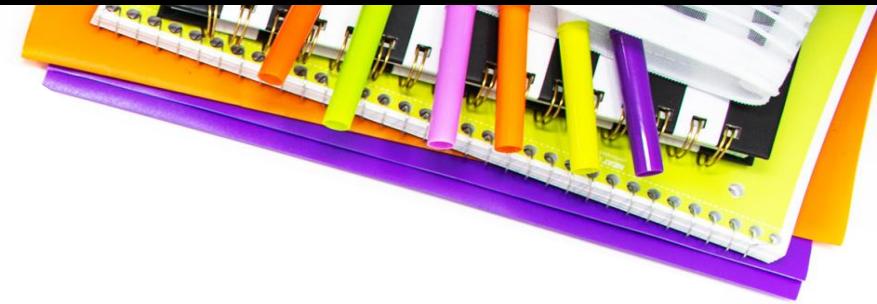
LET'S DRAW...
a spider



THE LIFETIME LEARNER

If students finish early,
give them a
certificate of completion
and a **directed drawing**
to complete while others
continue working.

MATH MYSTERY BENEFITS



- No Prep
- Print and Digital Versions
- 3 & 5 Clue Options
- Extra Math Facts Mystery
- Fun and Engaging
- Easy to Differentiate
- Encourages Critical Thinking
- Aligns with Math Standards
- Perfect for Review Days

Clue #4: The Haunted House

First, write the answer in each box on the haunted house. Then, read what to do in the box at the bottom.

Cross out the boxes with the following answers:
19, 17, 14, 18, 9, 11, 10

The letters that are left will reveal a message.

The culprit does not like candy that is Green.

THE LIFETIME LEARNER

In 1st grade, this works well as a whole group lesson or in small groups at the teacher table.

First graders will need teacher support to read & understand the clues/directions

WHY TEACHERS LOVE THESE!

Ordinary math worksheets can be boring and unoriginal.

You want activities that are fun and engaging, but also rigorous and meaningful to student learning.

MATH MYSTERIES ARE EXACTLY WHAT YOU'VE BEEN LOOKING FOR!

Clue #1: Fill in the Blank

30	is	118	eyes	96	the	71	green	73	bow	58	a
----	----	-----	------	----	-----	----	-------	----	-----	----	---

Clue #2: Right or Wrong?

6 more than 36	5 less than 20	8 more than 18
----------------	----------------	----------------

Clue #3: Halloween Sort

Figure out each answer. Color the candies the same color as the bag they belong in. Tally up how many of each candy you find in each box.

	Answer: 5		Answer: 6		Answer: 7		Answer: 8
--	-----------	--	-----------	--	-----------	--	-----------

Clue #4: The Haunted House

Clue #5: Picture Decoder

Find each answer. Then, draw a line to each match. Last, use the decoder at the bottom to solve the clue.

10	8	4	2	6	9	3	7	5	1

Answers: 6 5 3 2 8 7 9 4 10

Letters: C H O C O L A T E

The culprit doesn't like:

Use this decoder to help you figure out what letter is equal to each picture.

A =	G =	M =	S =	Y =
B =	H =	N =	T =	Z =
C =	I =	O =	U =	
D =	J =	P =	V =	
E =	K =	Q =	W =	
F =	L =	R =	X =	

The Detective Agency sends congratulations to:

Lindsay

You solved the mystery!

11/2 **AW**

Date Presented by:

LET'S DRAW... a witch hat

1 2 3

4 5 6

Color It!

LET'S DRAW... a spider

1 2 3

4 5 6

Color It!

Who Stole the Candy?

As you solve each clue, cross out the suspects who did not take the candy. The suspect left at the end is the culprit!

 I like green candy.	 I like marshmallows.	 I like red candy.	 I don't like candy.
Witch	Ghost	Vampire	Monster
 I like candy corn.	 I like green candy.	 I like chocolate candy.	 I like chocolate candy.
Spooky Bones	Frankenstein	Mummy	Pumpkin Head

Name: _____

solve the mystery

The Case of the Missing Candy

THE LIFETIME LEARNER

WHAT MAKES MATH MYSTERIES UNIQUE?

Math Mysteries aren't just a copy of Reading Mysteries!

They have brand-new clues, focus on math skills, and even feature a different conclusion to the mystery.

The only thing that stays the same is the list of suspects students start with!

So, if you have both, students can play during math and then again during reading for double the fun.

Reading

Clue #1: Find It!

Circle the boxes that have a middle sound of "a".
Read the words you circled from left to right like a book to solve the clue.

bat	the	fog	red	rag	thief	hop	big
hat	has	bun	leg	web	fang	pan	a
mop	no	leg	frown	map	smile		

Write the phrase on the line. Cross the wrong suspect off your list.

THE THIEF HAS A SMILE

Example
of Clue 1

Math

Clue #1: Fill in the Blank

30	is	118	eyes	96	the	71	green	73	bow	58	a
60	likes	69	wearing	59	red	87	hat	67	whoever	117	candy
40	took	80	marshmallow	55	eyes	44	candy	86	monster	114	not

Tell what number comes next. Some count up. Some count down.

Answer: 67	Word: whoever	120, 119, 118, _____	Answer: 117	Word: candy	72, 71, 70, _____	Answer: 69	Word: wearing	
73, 72, 71, _____	41, _____	27, 28, 29, _____	30	is	55, 56, 57, _____	58	a	
93, 94, 95, _____	96	the	111, 112, 113, _____	114	not	90, 89, 88, _____	87	hat

Solve each problem. Write the answer. Then, write the word that goes with it. When you are done, read the words in order from top to bottom in each row to figure out the clue.

KEEP THE FUN GOING!

GRAB A READING MYSTERY:

Reading mysteries aren't just a copy of math. They come with fresh clues, unique reading challenges, and a new culprit, so students are solving an entirely different case!



MORE MATH MYSTERIES:

Explore other grade levels to differentiate and keep every student engaged.



BUY A BUNDLE
TO SAVE BIG!

